



诸暨和创磁电科技有限公司  
ZHUJI HIEST MAGTECH CO., LTD



# MAGNETIC ASSEMBLY

## 磁性器件

诸暨和创磁电科技有限公司  
ZHUJI HIEST MAGTECH CO., LTD



Add: 浙江省诸暨陶朱街道文种路15号  
No.15 Wenzhong Road, Zhuji City, Zhejiang Province, China  
Tel: +86-575-87979816  
Fax: +86-575-87979815  
Mail: vivian.zhou@hiestmotor.cn  
tracy@hiestmotor.cn  
Web: www.hiestmagnet.com

### 用磁性技术改变世界

CHANGE THE WORLD THROUGH  
MAGNETIC TECHNOLOGY.



## 企业简介

## INTRODUCTION



## 用磁性技术改变世界

Change the world through magnetic technology.

诸暨和创磁电科技有限公司，位于浙江省诸暨市，从事磁性器件研发、生产和销售已逾28年。公司集产、学、研为一体，重视技术创新和技术专业化升级，与国内多家高校、科研机构合作，致力于打造成为国家级高新技术企业。

我们的研发团队深耕于磁性器件的研发、设计及制造，能够熟练运用先进的电磁建模软件对客户的具体需求进行定制化设计。目前我司生产各类磁性器件，包括各类吸力件、包胶件、永磁起重器、磁性滚筒及永磁联轴器，产品远销世界各地。公司先后通过数字化管理和精益运营管理，引入了先进的数字化管理体系，全方位监控订单、生产及售后的各个环节，承诺让每一笔订单高质量、高效地交付，并享受优质的售后跟进服务。

公司厂房占地40,000M<sup>2</sup>，拥有300多台加工设备，其中有5套焊接机器人、20多套高精度自动数控加工设备和10套加工中心。我们从筛选原材料开始，严格把控生产的各个环节，经过层层质检，确保交付的产品符合客户所在国的技术标准、环保标准。我司生产的产品均能提供各类检测报告，如REACH,ROHS, PAH, CE等等。集先进技术、优质服务、诚挚价格，我司期待为海内外更多客户创造价值，提供全方位的磁性器件解决方案。

Zhuji Hiest Magtech Co., Ltd. is located in Zhuji City, Zhejiang Province and has worked on magnetic assembly development, production and sale for more than 28 years. As an industry-university-research company, it attaches importance to technological innovation and professionalization upgrade. Cooperating with domestic colleges and scientific research institutions, it aims to be a national-level high and new tech-enterprise.

Our R&D team devotes to the development, design and manufacture of magnetic assemblies and proficiently applies advanced electromagnetism modeling software to complete customized design of clients. The magnetic assemblies of our company are sold around the world, including POT magnet, rubber coated magnet, permanent magnet lifter, magnetic pulley and permanent magnet coupling. The company has introduced advanced digital management system to monitor orders, production and after-sale service in digital management and lean operation management. We promise high-quality and high-efficiency delivery and considerate after-sale services for each order.

The workshop covers an area of 40,000 m<sup>2</sup>, and we have more than 300 sets of processing equipment, including 5 welding robots and more than 30 high accuracy Computerized Numerical Control (CNC) machines. Starting from the selection of raw material, we strictly control the production, and carry out quality inspection at each process to ensure that the products we delivered meet the technical and environmental standard. Test report can be offered for all products of our company, including REACH, RoHS, PAH, CE etc. Integrated with advanced technology, high-quality services and high performance-price ratio, we are expecting to create value for more clients at home and abroad and supply all-around magnetic solutions.





## 说明 Explanation

- ◆ 本册中的产品拉脱力是在常温下由产品与10mm抛光钢板以80mm/min的速度匀速拉脱测得，特殊情况下与指定值会有10%的最大偏差，通常情况下都超过指定值。产品实际应用的安装情况，温度等因素都会对吸力产生影响，如有特殊要求，请和我们联系。
- ◆ 注意：我司会在不通知的情况下持续更改和完善产品尺寸以及拉力标值。
- ◆ The pulling-out force of the product in this catalog was measured under normal temperature by pulling out the product from 10mm polished steel plate at an even speed of 80mm/min. The value may deviate from the designated value by 10% at most under a special circumstance. In general, the value is higher than the designated value. Pull force is affected by many product application factors, such as installation and temperature. For any special requirements, please let us know.
- ◆ **Remarks:** We may change and update the product size and nominal pull force value constantly without a prior notice.

若在我们的目录册或者官网上没有找到您想要的产品，我们可以根据客户的需要进行设计研发。

If you do not find the product you want in the catalog or our official website, we also support customized design.

## CONTENTS

### 吸附用磁 | Holding Magnet 01

铜磁铁  
POT Magnet



磁性包胶件  
Rubber  
Coated Magnet



磁性吸盘  
Magnetic Chuck



### 分离用磁 | Separating Magnet 08

磁性过滤器  
Magnetic  
Filter



磁棒  
Magnetic  
Rods



打捞磁  
Fishing  
Magnet



磁辊筒  
Drum  
Magnet

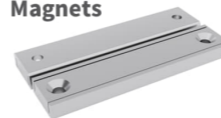


磁性油塞  
Magnetic  
Oil Plug

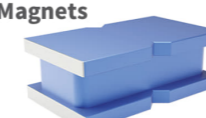


### 家具及家居配件 | Furniture and Household Accessories 14

轨道磁  
Channel  
Magnets



门吸用磁  
Door Catch  
Magnets



烟感用磁  
Smoke Detector  
Magnetic Holder



手枪吸附磁  
Gun Magnet



磁性刀架  
Magnetic  
Knife Holder



磁性理线器  
Magnetic  
Cable Holder



### 磁性起重器 | Magnetic Lifter 18

A 型  
A Series



C 型  
C Series



D 型  
D Series



E 型  
E Series



H 型  
H Series



### 工业用磁及其他 | Machinery Assemblies and Others 22

磁性转子  
Magnetic Rotor



磁性开关  
Magnetic  
Switch



音响用磁  
Magnetic  
Speaker Driver



### 工厂展示 | Factory Emphasis 26



# 磁性吸力件

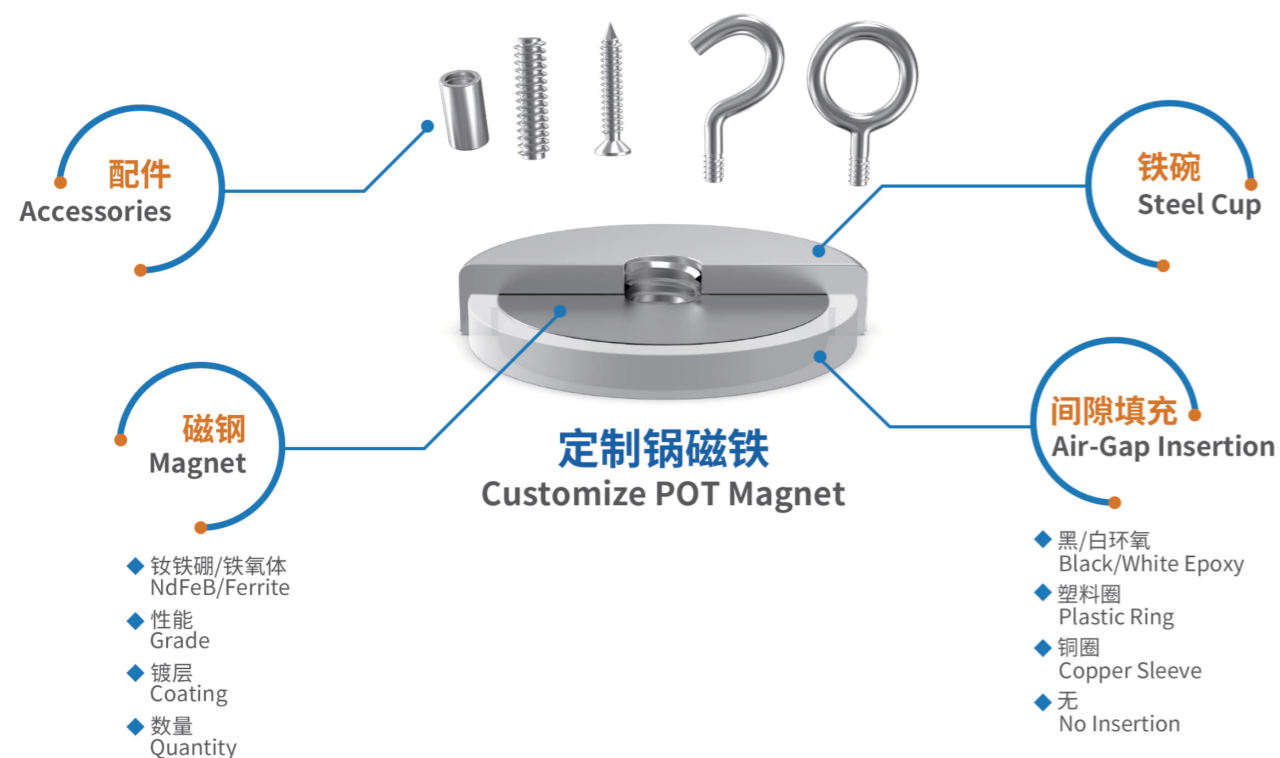
## HOLDING MAGNET

### 锅磁铁

#### POT Magnet

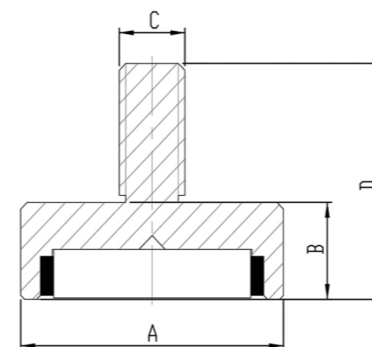
POT 吸力件一般由磁钢和导磁铁壳组成。铁壳可以将磁钢的另一面的磁场引导到吸力面，从而最大化地利用磁钢产生的吸力。同时，外壳可以保护磁钢减少了碰撞、破裂的可能。它可以做出各种形状，螺纹孔，沉孔，埋头孔，螺杆，可以方便地铆接。还可以配上挂钩和吊环，可以用来悬挂各式各样的产品。

POT magnet is generally composed of magnet and magnetic conductive steel cup, of which, the latter could lead the magnetic field on the other side to the suction surface so as to use the suction force generated by magnet most efficiently. The cup could also lower the possibility of magnet collision and cracking. It can be developed into different shapes, such as threaded hole, counter bore, countersink and screw so as to facilitate riveting. It can also be used for hanging different kinds of products together with hooks and eyelets.



### 01 HTN01系列

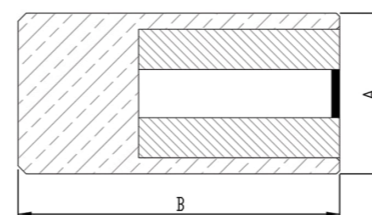
#### HTN01 Series



型号 Item Code	A (mm)	B (mm)	D (mm)	螺纹 Thread	吸力 Pull Force
HTN01-10	10	4.5	12.5	M4	2.5KG
HTN01-12	12	4	13	M3	3.2KG
HTN01-16	16	4.5	12.5	M6	9.5KG
HTN01-20	20	7	14	M5	14KG
HTN01-25	25	7	17	M6	20KG
HTN01-32	32	7	17	M6	35KG
HTN01-36	36	8	18	M6	62KG
HTN01-40	40	7	19.5	M8	65KG
HTN01-48	48	11.5	24	M8	81KG
HTN01-60	60	15	30	M8	112KG
HTN01-75	75	15	34	M10	164KG

### 02 HTN02系列

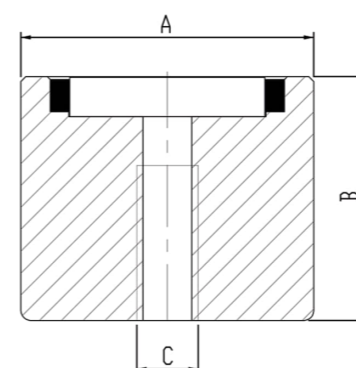
#### HTN02 Series



型号 Item Code	A (mm)	B (mm)	外壳材质 Cup Material	吸力 Pull Force
HTN02-08	16	4.5	黄铜/Brass	2.5KG
HTN02-10	20	7	黄铜/Brass	4.5KG
HTN02-13	25	7	黄铜/Brass	7KG
HTN02-22.2	36	8	铝/Aluminum	22KG
HTN02-31.75	40	7	不锈钢/Stainless Steel	15KG

### 03 HTN03系列

#### HTN03 Series

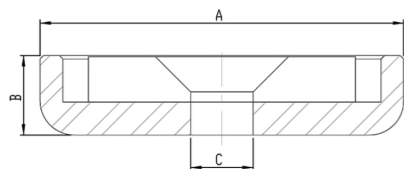


型号 Item Code	A (mm)	B (mm)	螺纹 Thread	吸力 Pull Force
HTN03-10	10	10	M4	1.2KG
HTN03-12	12	8	M4	6KG
HTN03-16	16	9	M4	2.5KG
HTN03-20	20	15	M6	6KG
HTN03-25	25	25	M6	10KG
HTN03-28	28	10	M5	20KG
HTN03-30	30	15	M6	23KG
HTN03-40	40	15	M6	45KG
HTN03-50	50	40	M6	50KG
HTN03-60	60	20	M6	90KG
HTN03-80	80	20	M6	130KG
HTN03-160	160	32	M20	1000KG



## 04 HTN04 系列

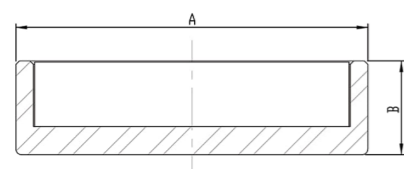
### HTN04 Series



型号 Item Code	A (mm)	B (mm)	C (mm)	吸力 Pull Force
HTN04-10	10	4.5	3	1.3KG
HTN04-16	16	4.5	3.5	6KG
HTN04-20	20	6	4.5	10KG
HTN04-25	25	7	5.5	20KG
HTN04-32	32	8	5.5	25KG
HTN04-42	42	9	6.5	37KG
HTN04-48	48	11.5	8.5	68KG
HTN04-60	60	15	8.5	120KG
HTN04-75	75	18	10.5	162KG
HTN04-90	90	18	10.5	227KG

## 05 HTN05 系列

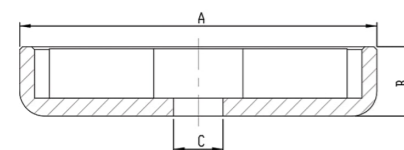
### HTN05 Series



型号 Item Code	A (mm)	B (mm)	吸力 Pull Force
HTN05-06	6	4.5	0.35KG
HTN05-16	16	4.5	9.5KG
HTN05-20	20	6	11KG
HTN05-25	25	7	20KG
HTN05-32	32	7	35KG
HTN05-40	40	8.5	50KG
HTN05-65	65	10	135KG
HTN05-70	70	19	145KG

## 06 HTN06 系列

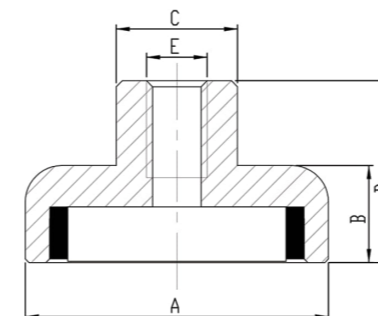
### HTN06 Series



型号 Item Code	A (mm)	B (mm)	C (mm)	吸力 Pull Force
HTN06-16	16	5	3.5	4KG
HTN06-20	20	7	3.5	11KG
HTN06-25	25	7	6	13.5KG
HTN06-32	32	8	6	28KG
HTN06-36	36	7	5	35KG
HTN06-40	40	8	5.5	50KG
HTN06-42	42	8	6.5	57KG
HTN06-48	48	11.5	8.5	63KG
HTN06-60	60	15	8.5	95KG
HTN06-75	75	18	10.5	155KG

## 07 HTN08 系列

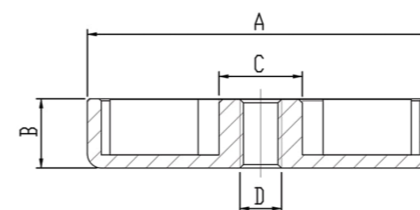
### HTN08 Series



型号 Item Code	A (mm)	B (mm)	C (mm)	D (mm)	螺纹 Thread	吸力 Pull Force
HTN08-10	10	4.5	6	11.5	M3	2.5KG
HTN08-13	13	4.5	6	11.5	M3	6KG
HTN08-16	16	5	6.5	13	M4	6KG
HTN08-20	20	7.3	6.5	15	M4	13KG
HTN08-25	25	7	8	14	M4	22KG
HTN08-32	32	8	10	18.7	M6	40KG
HTN08-36	36	9	10	16	M6	41KG
HTN08-42	42	11.5	12	16	M6	68KG
HTN08-48	48	11.5	12	24	M8	81KG
HTN08-63	63	15	15	30	M8	150KG
HTN08-75	75	15	20	34	M10	200KG
HTN08-100	100	15	20	32.5	M10	350KG

## 08 HTN09 系列

### HTN09 Series



型号 Item Code	A (mm)	B (mm)	C (mm)	螺纹 Thread	吸力 Pull Force
HTN09-25	25	10	6.7	M4	16.7KG
HTN09-26	26	7	7.5	M4	8KG
HTN09-30	30	10	13	M5	6KG
HTN09-40	40	6	10	M5	15KG
HTN09-48	48	10.8	13	M8	72KG
HTN09-75	75	15	18	M10	270KG
HTN09-90	90	30	20	M6	400KG

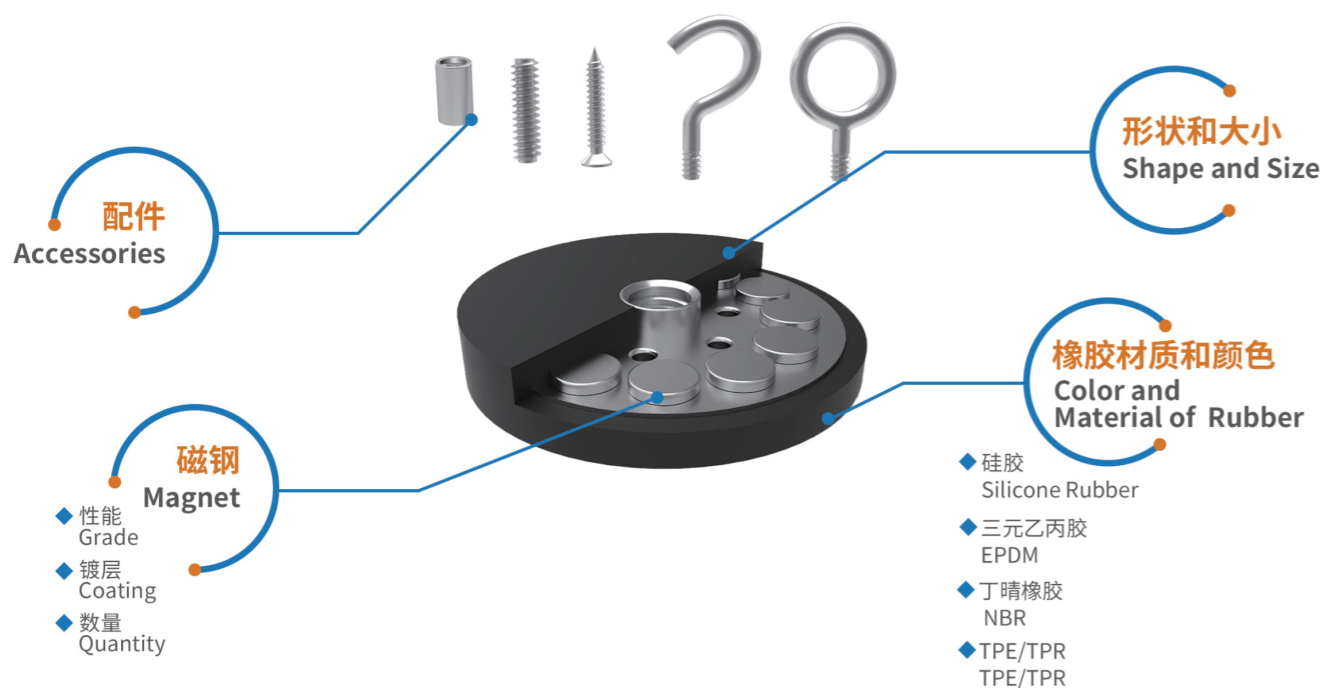


## 磁性包胶件

### Rubber Coated Magnet

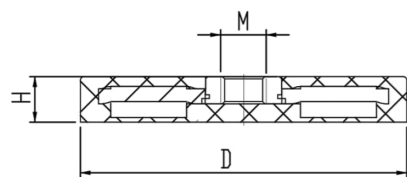
磁性包胶件是由钕铁硼磁铁、导磁钢板和橡胶外壳组成的磁性吸力件。橡胶外壳一方面可以最大程度地保护磁钢，避免出现破损或损坏，另一方面不同的橡胶材料可以增加摩擦力，并保护吸附表面减少磨损。它可以搭配多种配件，如挂钩、吊环及螺杆等，适用于多种适用场景。

The rubber coated magnet is a kind of magnetic suction part consisting of NdFeB magnet, magnetic conductive steel plate and rubber shell. In particular, the rubber shell could protect the magnet from being damaged or destroyed. Furthermore, different rubber materials could increase friction force and protect the suction surface from being worn. It can be matched with various kinds of accessories, such as hooks, rings and screws and is applicable to different scenarios.



## 01 HVN11 系列平内螺纹

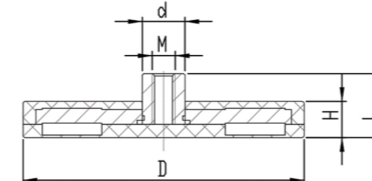
### HVN11 Series Concave Female Thread



型号 Item Code	D (mm)	H (mm)	M (mm)	吸力 Pull Force	温度 Temperature
HVN11B-22C	22	6	M4	3KG	80°C
HVN11B-31A	31	6	M5	8KG	80°C
HVN11B-36	36	7	M6	15KG	80°C
HVN11B-36A	36	7	M4	15KG	80°C
HVN11B-43C	43	6	M4	8.5KG	80°C
HVN11B-66A	66	8	M4	18KG	80°C
HVN11B-88A	88	8.2	M8	42KG	80°C
HVN11B-89.3	89.3	8.5	M6	42KG	80°C

## 02 HVN11 系列凸内螺纹

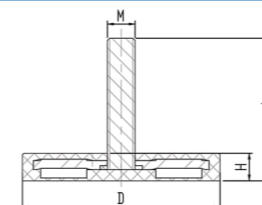
### HVN11 Series Convex Female Thread



型号 Item Code	D (mm)	H (mm)	d (mm)	L (mm)	螺纹 Thread	吸力 Pull Force	温度 Temperature
HVN11B-22	22	6	8	11.5	M4	3.5KG	80°C
HVN11B-31C	31	6	8	11.5	M4	8.5KG	80°C
HVN11B-36B	36	7	12	18	M8	15KG	80°C
HVN11B-43A	43	6	8	10.5	M4	8.5KG	80°C
HVN11B-66	66	8.5	10	15	M5	18KG	80°C
HVN11B-88	88	8.2	12	17	M6	42KG	80°C
HVN11B-89.3	89.3	8.5	12	8.5	#1/4-20	45KG	80°C

## 03 HVN11 系列外螺纹

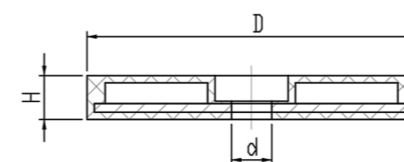
### HVN11 Series Male Thread



型号 Item Code	D (mm)	H (mm)	L (mm)	螺纹 Thread	吸力 Pull Force	温度 Temperature
HVN11A-12	12	7.5	15.5	M4	1.3KG	80°C
HVN11A-22	22	6	12.5	M4	4.5KG	80°C
HVN11A-31	31	6	15.6	M6	8KG	80°C
HVN11A-36	36	7	16.5	M5	15KG	80°C
HVN11A-43	43	6	21	M6	9.5KG	80°C
HVN11A-66B	66	8	23	M6	20KG	80°C
HVN11A-88A	88	8.2	20.2	#1/4-20	42KG	80°C
HVN11A-89.3A	89.3	8.5	23.5	#1/4-20	45KG	80°C

## 04 HVN11 系列沉孔

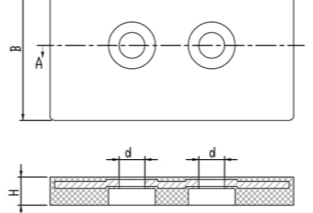
### HVN11 Series Counter Bore



型号 Item Code	D (mm)	H (mm)	L (mm)	吸力 Pull Force	温度 Temperature	备注 Remark
HVN11-22A	22	6	4.1	3.5KG	80°C	直孔/Straight Hole
HVN11-30C	30	9	5.5	3KG	80°C	直孔/Straight Hole
HVN11-31	31	8.5	6	8.5KG	80°C	直孔/Straight Hole
HVN11-43	43	6	7.5	8.5KG	80°C	沉孔/Countersunk
HVN11-45B	45	6	5.5	9KG	80°C	直孔/Straight Hole
HVN11-60	60	7.5	5.5	22KG	80°C	直孔/Straight Hole
HVN11-65.5	65.5	8.5	8.5	18KG	80°C	沉孔/Countersunk
HVN11-88	88	8.5	8.5	42KG	80°C	沉孔/Countersunk

## 05 HVN12 系列

### HVN12 Series



型号 Item Code	L (mm)	B (mm)	H (mm)	D (mm)	吸力 Pull Force	温度 Temperature
HVN12-34	34	32	6	5.5	6KG	80°C
HVN12-52A	52	32	6	5.5	7.5KG	80°C
HVN12-70	70	22	6	5.5	5KG	80°C
HVN12-70A	70	22	6	5.5	7KG	80°C
HVN12-108	108	52	7	5.5	18KG	80°C



## 磁性吸盘

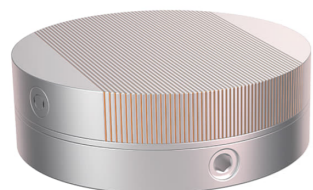
### Magnetic Chuck

磁性吸盘是一种磁性夹具，广泛应用于机械厂，模具厂等机加工领域。它以高性能的稀土材料钕铁硼为内核，通过手扳动吸盘手柄转动，从而改变吸盘内部钕铁硼的磁力系统，进而吸持或释放被加工工件，可以大大提高导磁性钢铁材料装夹效率。

As a kind of magnetic fixture, the magnetic chuck is extensively applied in machining of machinery plants and mold plants. Based on the high-performance rare earth material NdFeB, Magnetic chunk could hold or release processed workpiece by changing the NdFeB magnetic system inside the chunk through rotation via the chunk handle by hands, improving the clamping efficiency of magnetic conductive steel significantly.

### 01 圆型磁性吸盘

#### Round Magnetic Chuck



型号 Item Code	尺寸 Size	极间距 Pole Pitch	吸力 Suction
HPFY-125	D125X48mm	1+3 mm	100-120N/cm2
HPFY-150	D150X48mm	1+3 mm	100-120N/cm2
HPFY-250	D250X52mm	1+3 mm	100-120N/cm2
HPFY-400	D400X58mm	1+3 mm	100-120N/cm2
HPFY-500	D500X65mm	1+3 mm	100-120N/cm2

### 02 方型磁性吸盘

#### Rectangular Magnetic Chuck



型号 Item Code	尺寸 Size	极间距 Pole Pitch	吸力 Suction
HPMCR-160	160X70X45	1+3 mm	100-120N/cm2
HPMCR-250	250X150X48	1+3 mm	100-120N/cm2
HPMCR-350	350X150X48	1+3 mm	100-120N/cm2
HPMCR-450	450X150X53	1+3 mm	100-120N/cm2
HPMCR-500	500X250X58	1+3 mm	100-120N/cm2
HPMCR-600	600X300X58	1+3 mm	100-120N/cm2
HPMCR-700	700X400X60	1+3 mm	100-120N/cm2

## 分离用磁

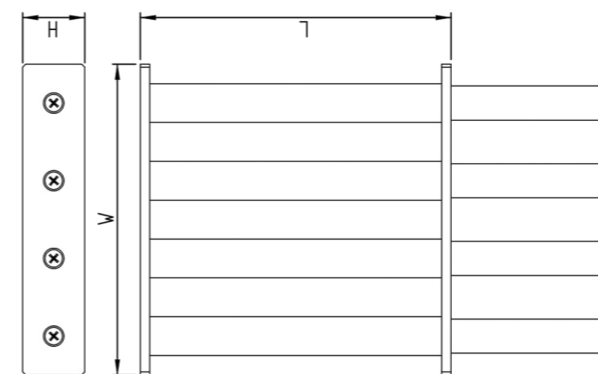
### SEPARATING MAGNET

## 磁性过滤器

### Magnetic Filter

磁性过滤器由多根优质的磁棒有序地组合在固定架上构成。当含铁或带磁的物质通过时，受到磁棒的吸引，将会被吸附在管壁上。磁性过滤架主要用于清除粉状、颗粒状原料及液体或浆料中的铁磁性杂质，广泛适用于陶瓷、电力、矿业、塑料、化工、橡胶、制药、食品、环保、颜料、染料、电子、冶金等行业。

Magnetic filter consists of several high-quality magnetic rods, which are assembled on the fixed bracket in order. Ferruginous or magnetic substance will be absorbed on pipe wall by the suction effect of magnetic rod when passing through the magnetic filter. The magnetic filter is mainly used for removing powder and particle raw materials, ferruginous and magnetic impurities in liquid or sizing agent. It has been extensively used in such industries as ceramics, power, mining, plastic, chemical engineering, rubber, pharmacy, food, environmental protection, pigment, dye, electronics, metallurgy, etc.



型号 Item Code	W (mm)	L (mm)	H (mm)	表面高斯 Surface Field (Gs)	温度 Temperature
ZJ-HPXL01-22-180	200	200	40	10000	80°C
ZJ-HPXL01-22-226	250	250	40	10000	80°C
ZJ-HPXL01-22-276	300	300	40	10000	80°C

## 磁棒

### Magnetic Rods

磁棒由内部的磁芯和和外部的外包层组成,磁芯由圆柱形磁铁块和导磁铁片组成。磁棒主要是用来过滤各种细小粉末和液体,半液体中的含铁杂质和其他带磁性的物质,目前广泛应用于化工、食品、废品回收、碳黑等领域。

The magnetic rod consists of the internal magnetic core and external cladding, of which, the magnetic core is also composed of cylindrical magnet and magnetic conductive iron sheet. The rod is mainly used for filtering various kinds of fine powders, ferruginous impurities in liquid and semi-liquid and other magnetic substances. It has been extensively used in such fields as chemical engineering, food, waste recycling, carbon black, etc.



型号 Item Code	D (mm)	L (mm)	螺纹 Thread	螺纹数量 Thread qty.	磁区长度(mm) Magnetic Length	外管材料 Tube Material	表面高斯(Gs) Surface Field
HCB71-16-155-7	D16	155	/	/	120	304	7000
HCB71-16-947-34	D16	947	/	/	609	304	7000
HCB71-25-100-3	D25	100	M6	1	85	316L	11500
HCB71-25-139.7-4	D25	139.7	#1/4-20	1	112	316L	11500
HCB71-25-150-4	D25	150	M6	1	112	316L	11500
HCB71-25-162-5	D25	162	#1/4-20	1	139	316L	11500
HCB71-25-171.5-5	D25	171.5	#1/4-20	1	139	316L	11500
HCB71-25-173-5	D25	173	#1/4-20	1	139	316L	11500
HCB71-25-200-6A	D25	200	#1/4-20	1	166	316L	11500
HCB71-25-200-6	D25	200	M6	1	166	316L	11500
HCB71-25-215.9-7	D25	215.9	#1/4-20	1	193	316L	11500
HPXL01-9.5-100	D9.5	100	M6	2	74	304	7000
HPXL01-9.5-100A	D9.5	100	M6	2	64	304	11000
HPXL01-9.5-500	D9.5	500	M6	2	470	304	7000
HPXL01-9.5-500A	D9.5	500	M6	2	464	304	11000
HPXL01-12-100	D12	100	M6	2	64	304	8000
HPXL01-12-100A	D12	100	M4	2	64	304	8000
HPXL01-12-400	D12	400	M4	1	382	304	7000
HPXL01-12-500	D12	500	M6	2	464	304	7000
HPXL01-13-80	D12.7	80	M6	1	60	304	7000
HPXL01-16-100	D16	100	M6	2	64	304	9000
HPXL01-16-500	D16	500	M6	2	464	304	9000
HPXL01-19-140	D19	140	M6	1	114	304	9000
HPXL01-20-200	D20	200	M8	1	172	304	8000
HPXL01-20-200A	D20	200	M8	1	172	304	12000
HPXL01-25-100	D25	100	M6	1	73.5	304	13000
HPXL01-25-100A	D25	100	M6	1	74	316L	4000
HPXL01-25-100C	D25	111	M6	1	85	316L	13000
HPXL01-25-100D	D25	100	M6	1	77	304	4000
HPXL01-25-120	D25	120	M6	2	68	304	3000
HPXL01-25-135	D25	135	M8	1	120	304	7500
HPXL01-25-150	D25	150	M8	1	112	304	12000
HPXL01-25-150A	D25	150	M6	1	137	304	4000
HPXL01-25-165.1	D25	165.1	#1/4-20	1	137	316L	11500
HPXL01-25-200	D25	200	M6	1	166	304	13000
HPXL01-25-200C	D25	200	M6	1	182	304	4000
HPXL01-25-250	D25	250	M6	1	220	304	13000
HPXL01-25-300A	D25	300	M8	1	264	316L	13000
HPXL01-25-300	D25	300	M6	1	287	304	4000
HPXL01-25-348	D25	348	M8	2	281	316L	3000
HPXL01-25-380	D25	380	M8	2	326	316L	12000
HPXL01-25-400	D25	400	M8	1	345	316L	13000
HPXL01-25-452	D25	452	M8	2	385	316L	13000
HPXL01-25-473	D25	473	M8	2	406	316L	13000
HPXL01-25-492	D25	492	M8	2	434	316L	13000
HPXL01-25-543	D25	543	M8	2	476	316L	13000
HPXL01-25-568	D25	568	M8	2	499	316L	13000
HPXL01-25-570	D25	570	M8	2	488	316L	13000
HPXL01-25-627	D25	627	M8	2	557	316L	13000
HPXL01-25-928	D25	928	M8	2	543	316L	13000
HPXL01-25-1000A	D25	1000	M8	2	734	316	12000
HPXL01-25-1000B	D25	1000	M8	2	734	316	6500
HPXL01-25A-200	D25	200	M8	1	166	316	12000
HPXL01-25B-200	D25	200	M10	1	166	316	12000
HPXL01-32-200	D32	200	M6	1	174	304	13000
HPXL01-32-320	D32	320	M8	1	294	304	4000
HPXL01-35-200	D35	200	M6	1	189	304	13000

## 打捞磁

### Fishing Magnet

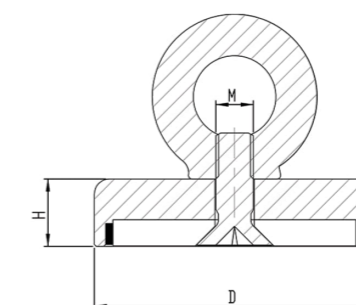
打捞磁是由强磁POT磁铁配合吊环组成,用于探索或者打捞隐藏、丢失在湖泊里的铁质物体。打捞磁通常配合绳子一起使用,成为近年来比较流行的户外探索活动。

Fishing magnet includes strong power POT magnet and eyelet. It is used for exploring or fishing ferruginous objects in lake together with rope. It has also been extensively used in outdoor exploration activities in recent years.



### 01 HTN04系列

#### HTN04 Series

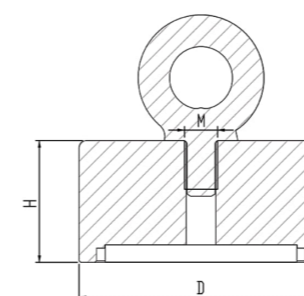


型号 Item Code	直径 Diameter (mm)	厚度 Height (mm)	吊环 Eyelet	吸力 Pull Force
HTN04-60C	60	15	M8	113KG
HTN04-75E	75	18	M10	162KG
HTN04-85	85	18	M10	220KG
HTN04-90	90	18	M10	227KG



### 02 HTN03系列

#### HTN03 Series



型号 Item Code	直径 Diameter (mm)	厚度 Height (mm)	吊环 Eyelet	吸力 Pull Force
HTN03-40J	40	15	M8	70KG
HTN03-40I	40	20	M8	80KG
HTN03-50H	50	20	M8	110KG
HTN03-55	55	20	M8	130KG
HTN03-60C	60	25	M10	180KG
HTN03-60D	60	35	M10	180KG
HTN03-60B	60	40	M8	160KG
HTN03-60E	60	40	M12	175KG
HTN03-65B	65	25	M10	162KG
HTN03-65A	65	30	M10	185KG
HTN03-70	70	35	M10	220KG
HTN03-80	80	35	M10	270KG

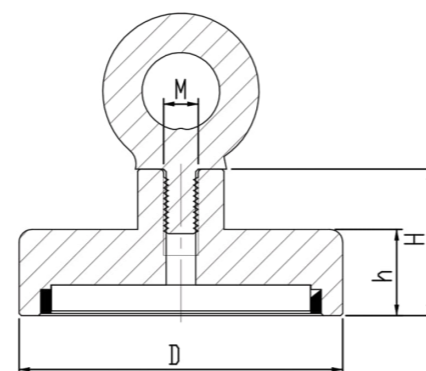


### 03 HTN08 系列

#### HTN08 Series



型号 Item Code	直径 (mm) Diameter	h (mm)	H (mm)	吊环 Eyelet	吸力 Pull Force
HTN08-48	48	8	20	M8	80KG
HTN08-48B	48	11.5	24	M8	80KG
HTN08-48D	48	11	24	M8	80KG
HTN08-60A	60	15	30	M8	116KG
HTN08-63	63	15	30	M8	140KG
HTN08-75	75	15	34	M10	200KG
HTN08-75D	75	20	34	M8	230KG
HTN08-80A	80	25	46	M10	300KG
HTN08-80B	80	20	36	M10	300KG
HTN08-90	90	30	51	M10	400KG
HTN08-100A	100	35	56	M12	500KG

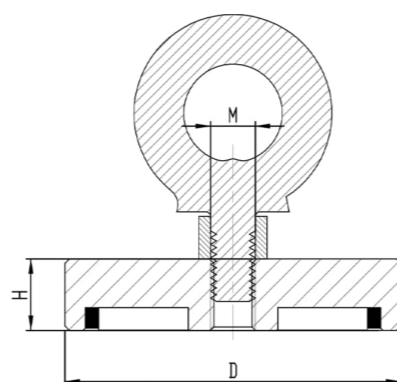


### 04 HTN09 系列

#### HTN09 Series



型号 Item Code	直径 (mm) Diameter	厚度 (mm) Height	吊环 Eyelet	吸力 Pull Force
HTN09-67	67	12	M10	120KG
HTN09-75A	75	16	M10	200KG
HTN09-97	97	20	M10	300KG
HTN09-107	107	20	M10	400KG
HTN09-135	135	25	M12	600KG

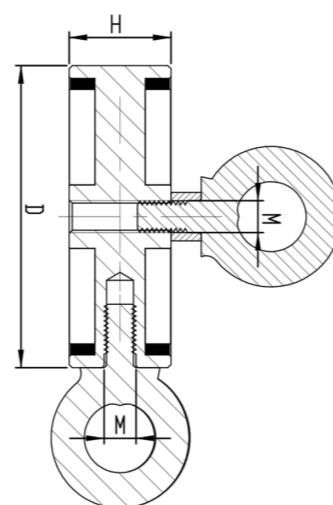


### 05 HTN09 系列 双面吊环

#### HTN09 Series Double Eyelets



型号 Item Code	直径 (mm) Diameter	厚度 (mm) Height	中心吊环 Center Eyelet	侧面吊环 Side Eyelet	吸力 Pull Force
HTN09-67 (SM)	67	28	M10	M8	120KG
HTN09-75 (SM)	75	28	M10	M8	200KG
HTN09-75A (SM)	75	25	M10	M10	200KG
HTN09-95 (SM)	95	25	M10	M10	400KG
HTN09-97 (SM)	97	40	M10	M8	400KG
HTN09-107 (SM)	107	35	M10	M8	500KG
HTN09-135 (SM)	135	40	M12	M10	800KG



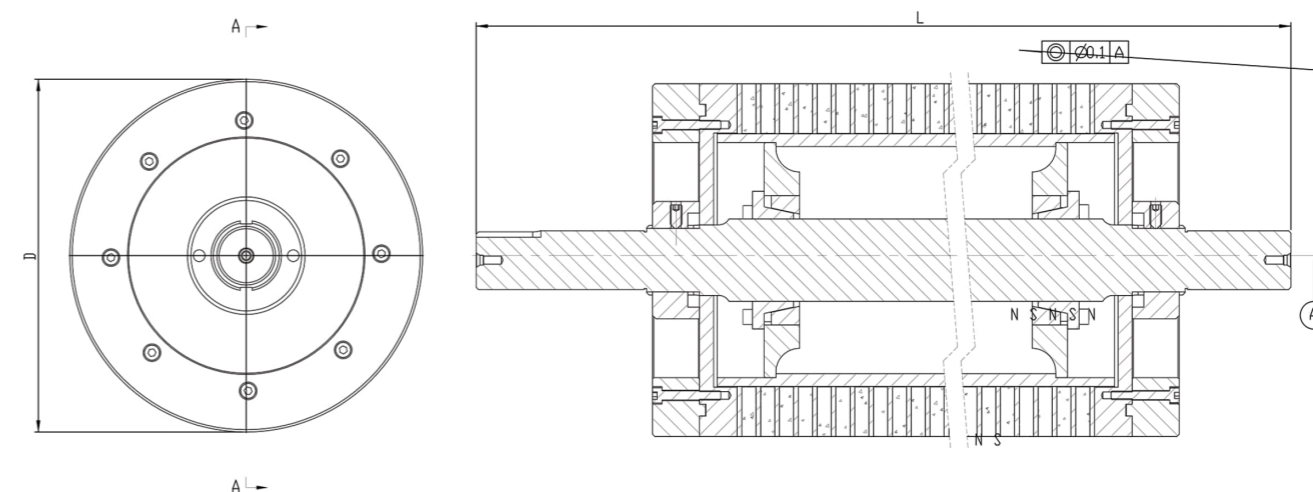
## 磁滚筒

### Drum Magnet

磁性滚筒主要是用来清除浆料、颗粒或粉末中的铁质杂质，采用优质不锈钢管和高Br值的稀土合金钕铁硼，并采用特殊的制作方法制作而成。可以安装在传送设备的电机上，使之与传送带形成磁性分离器。当含铁的物质通过时，受到磁滚筒的吸引，将含铁的物质与物料分离，以保证设备的完好和产品的安全。广泛适用于陶瓷、电力、矿业、塑料、化工、橡胶、制药、食品、环保、颜料、染料、电子、冶金等行业。



Used for removing ferruginous impurities in slurry, particle or powder mainly, the drum magnet (magnetic roller) is made of high-quality stainless steel pipe and rare earth alloy NdFeB with a high Br value via special production method. It can be mounted on the motor of transmission equipment to work as magnetic separator together with conveyor belt. When passing through the separator, the ferruginous substances will be separated from materials under the effect of magnetic roller in order to ensure equipment intactness and product safety. It has been extensively used in such industries as ceramics, power, mining, plastic, chemical engineering, rubber, pharmacy, food, environmental protection, pigment, dye, electronics, metallurgy, etc.



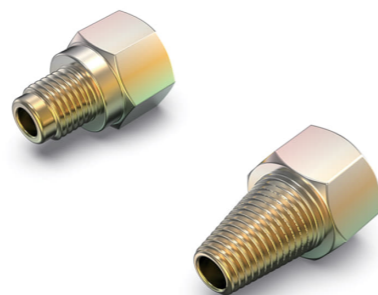
型号 Item Code	D (mm)	L (mm)	表面高斯 Surface Field (Gs)	磁钢类型 Magnet Type
HGXJ-1940	300	1940	9000	NdFeB
HGXJ-1945	300	1945	11000	NdFeB
HGXJ-3030	R599	3030	1200	Ferrite

## 磁性油塞

### Magnetic Oil Plug

磁性油塞是由磁铁组装入一个带螺纹的堵头而成，一般置于齿轮箱底部润滑油池最低点，用于清理油箱中的铁质杂质。

Magnetic oil plug consists of a magnet and a threaded plug which is set inside the magnet. Generally mounted at the lowest point of lubricating oil pool at the bottom of gearbox, it is used for clearing the ferruginous impurities in oil tank.



## 家具及家居配件

### FURNITURE AND HOUSEHOLD ACCESSORIES

## 轨道磁

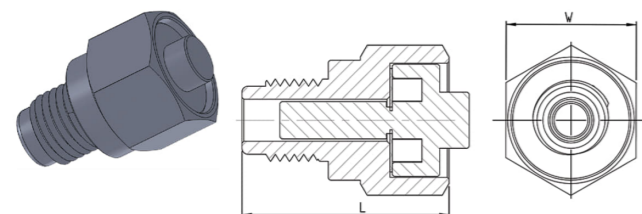
### Channel Magnet

磁性轨道通常由带有一个或者两个孔的方块磁钢和槽型铁件组成，可以通过螺钉固定在墙上或者天花板上来吸持各种金属物件。槽型铁件可以将磁钢的另一面的磁场引导到吸力面，从而最大化地利用磁钢产生的吸力

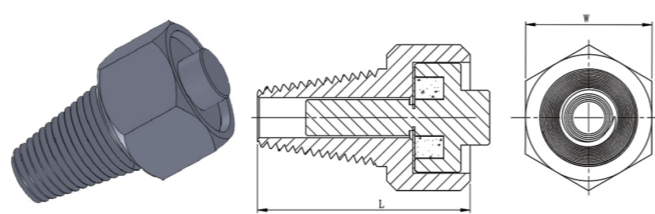


Channel magnet is generally composed of a block magnet with one or two holes and groove iron piece. It is fixed on wall or ceiling via screw to retain various kinds of metal objects. The groove iron piece could lead the magnetic field on the other side to the suction surface so as to use the suction force generated by magnet most efficiently.

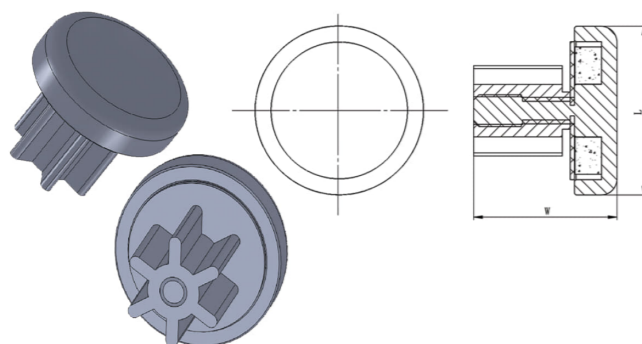
HCYS19-35



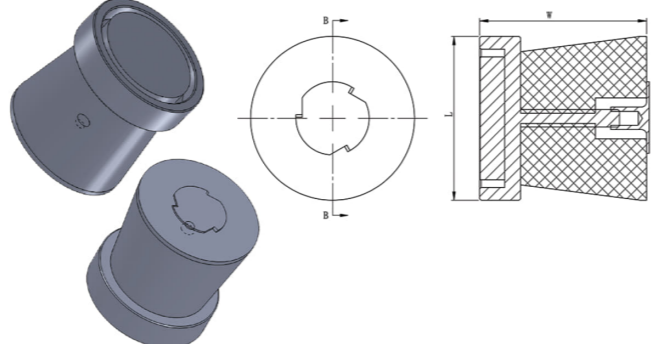
HCYS19-37



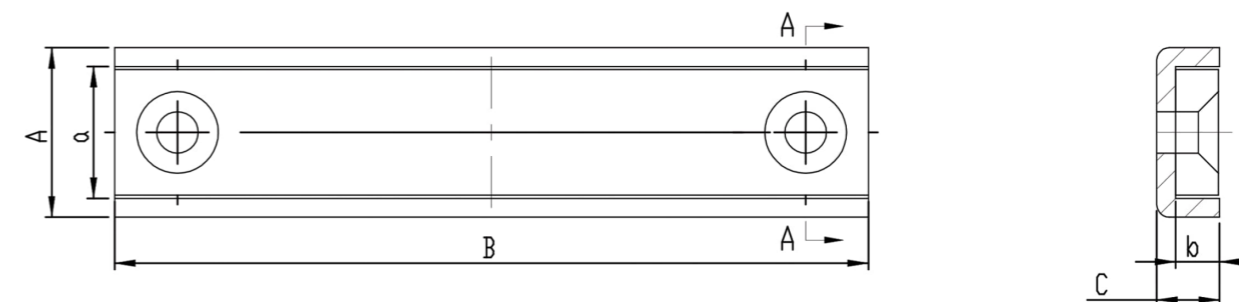
HCYS31.8-B



HCYS32-1



型号 Item Code	L (mm)	W (mm)	磁钢类型 Magnet Type	镀层 Coating
HCYS19-35	35	22	NdFeB	Ni
HCYS19-40	40	22	NdFeB	Ni
HCYS31.8-B	31.8	27	NdFeB	Cr
HCYS32-1	32	32.6	NdFeB	Ni
HCYS19-37	37	22	NdFeB	Ni
HCYS19-46	46	22	NdFeB	Ni
HCYS19-46.4	46.4	22	NdFeB	Ni



型号 Item Code	A×B×C (mm)	孔尺寸 Holes	磁钢类型 Magnet Type	吸力 Pull Force	开孔位置 Borehole Position
HYN21A-25	25x20x8.3	D4.2/6.9X1	NdFeB	15KG	磁钢/Magnet
HYN21A-40	40X19X8-4R2	D5.3X2	NdFeB	10KG	铁壳/Steel House
HYN21-50.8A	50.8X31.75X4.9	D4.9/9.3X2	NdFeB	54KG	磁钢/Magnet
HYN21A-50.8	50.8X19.05X4.9	D4.5/8.6X2	NdFeB	27KG	磁钢/Magnet
HYN21A-50.9	50.9x20.65x9.2	D4.2/8.3X2	NdFeB	32KG	磁钢/Magnet
HYN21A-60	60X13.5X5	D3.3/6.5X2	NdFeB	30KG	磁钢/Magnet
HYN21A-60A	60X13.5X5	/	NdFeB	30KG	/
HYN21A-100	100X13X5	D4/7.6X2	NdFeB	50KG	磁钢/Magnet

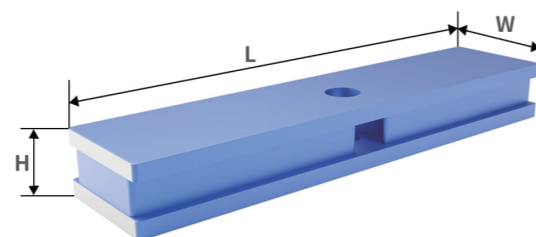


## 磁性门吸

### Door Catch Magnet

磁性门吸经常由两部分组成，一部分是带磁性的组件，可以是铁片加铁氧体制成，也可以是铁碗加钕铁硼制成，这一部分会安装在门上；另一部分往往是一片导磁铁片，安装在门框上。两部分可以在接近时互相吸引，也可以在杠杆作用下分离，达到自动并且方便锁门的效果。

Door catch magnet consists of two parts, of which, the first part is magnetic component, which is made from steel channel and ferrite or NdFeB, and is mounted on door. The second part is one magnetic conductive steel plate, which is installed on door frame. When approaching to each other, the two parts attract each other or separate under lever effect so as to lock the door automatically and easily.



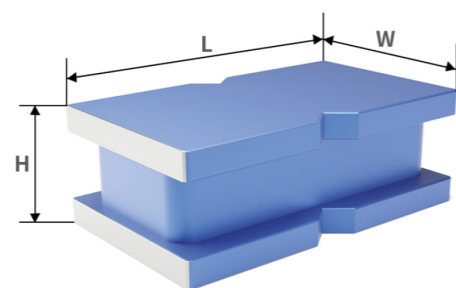
### 01 HL 系列 方形

#### HL Series Rectangular

型号 Item Code	L (mm)	W (mm)	H (mm)	磁钢类型 Magnet Type	镀层 Coating	吸力 Pull Force
HLF52B-35-1	35	25	20	Ferrite	Painting	9KG
HLF52B-60-1	60	30	16	Ferrite	Zn	50KG
HLF52B-130-2	130	30	16	Ferrite	Zn	100KG

### 02 HL 系列 异形

#### HL Series Special Shaped



型号 Item Code	L (mm)	W (mm)	H (mm)	磁钢类型 Magnet Type	镀层 Coating	吸力 Pull Force
HLF54B-37.1-1	31.7	25.4	8	Ferrite	Ni	2.3~5KG
HLF54B-50-1	50	30	20	Ferrite	Powder Painting	24KG
HLF54B-50.6-1	50.6	30	18	Ferrite	Powder Painting	24KG

## 烟感用磁

### Smoke Detector Magnetic Holder

磁性烟感固定器可以用来固定无线烟感报警器，不需要钻孔就可以将烟感报警器固定在天花板上，并且也可以方便地取下更换电池。



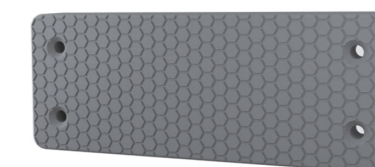
Smoke detector magnetic holder is used for fixing wireless smoke detector. With it, the smoke detector could be fixed on ceiling without drilling. Furthermore, battery can also be replaced easily.

型号 Item Code	D (mm)	H (mm)	磁钢数 Magnet Qty.	承重 Load Bearing	工作温度 Temperature
SMDN40-02A	40	7	2	0.8KG	40°C
SMDN40-03A	40	7	3	0.8KG	40°C
SMDN70-02A	70	7	2	1.3KG	40°C
SMDN70-03A	70	7	3	1.3KG	40°C

## 枪磁

### Gun Magnet

枪磁是磁铁包胶件中的一种，可以用来吸持枪支。通过枪磁来固定，可以将枪支收纳在任意位置，方便拿取，以应付紧急之需。



As a kind of rubber coated magnet, gun magnet is used for holding guns. Once fixed by the gun magnet, guns could be replaced at any position and taken easily in order to cope with emergencies.

型号 Item Code	形状 Shape	尺寸 Size	吸力 Pull Force	图案 Pattern
HVN11-50B	圆形/Round	D50X8mm	25 lbs	蜂巢型/Honeycomb Type
HVN12-103.7	长方形/Rectangular	103.7X39.5X12.8mm	35 lbs	蜂巢型/Honeycomb Type
HVN12-103.7R	长方形/Rectangular	103.7X39.5X12.8mm	43 lbs	蜂巢型/Honeycomb Type
HVN12-152.4	长方形/Rectangular	152.4X50.8X12.8mm	43 lbs	定制款/Customized
HVN12-160.8	长方形/Rectangular	160.8X78.1X7.7mm	43 lbs	定制款/Customized

## 磁性刀架

### Magnetic Knife Holder

磁性刀架由高质量的不锈钢盖和磁钢组成。用磁性刀架来整理各种刀具、玩具、钥匙、儿童玩具以及其他导磁产品，可以让您的厨房、房间、车间更加整齐整洁。



The magnetic knife holder, which consists of high-quality stainless steel cover and magnet, can be used for organizing various kinds of tools, toys, keys, children's toys and other magnetic conductive products in order, to make your kitchen, room and workshop cleaner and more orderly.



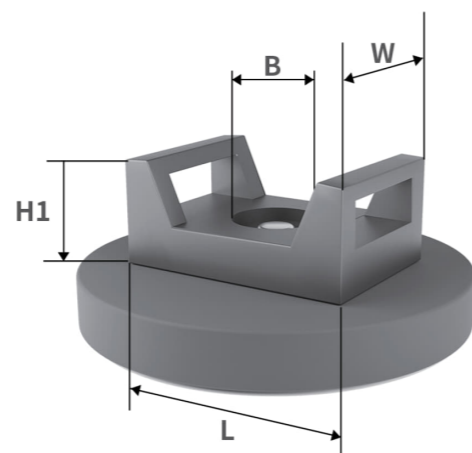
型号 Item Code	L (mm)	W (mm)	H (mm)	外壳材质 Shell Material	温度 Temperature
HYF21-250	250(10")	47	16.5	不锈钢Stainless steel	80°C
HYF21-400	400(16")	47	16.5	不锈钢Stainless steel	80°C
HYF21-380	380(15")	48	14	ABS	80°C

## 磁性理线器

### Magnetic Cable Holder

磁性理线器是包胶件搭配马鞍型塑料件用在固定电线的一种应用，用磁性理线器，可以有效保护被吸物体的外观不被划伤。

Magnetic cable holder is used for fixing cables once used together with saddle type plastic part. It can prevent object appearance from being scratched efficiently.



型号 Item Code	D (mm)	H (mm)	螺纹 Thread	L (mm)	W (mm)	H1 (mm)	B (mm)	吸力 Pull Force
HVN11B-22C	22	6	M4	15	10	7	4	3.5KG
HVN11B-31A	31	6	M5	23	16	9	5	7.5KG
HVN11B-43N	43	6	M5	23	16	9	5	8.5KG

## 起重器

### MAGNETIC LIFTER

永磁起重器由强钕铁硼磁性材料组成磁路系统产生强磁，通过手柄的旋转来控制磁路开关，实现对负载物的吸持和卸下。永磁起重器不用通电，磁力恒久不衰且使用安全，具有体积小、自重轻、吸持力大、操作方便等特点。

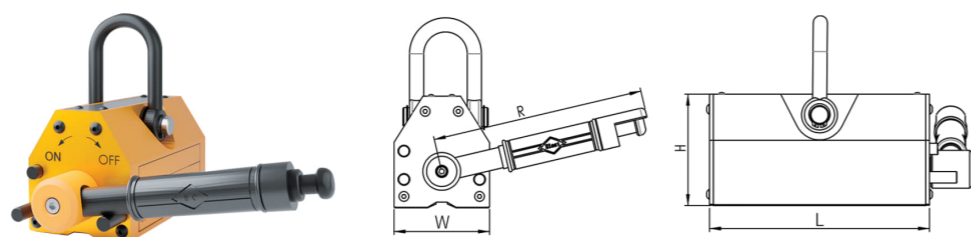
Magnetic lifter is composed of NdFeB and iron-Base, which is used for holding and releasing objects by rotating the handle between "ON" and "OFF" to control the magnetic circuit inside it. It consumes no power and could bring permanent magnetic force with the characteristics of use safety, small volume, light weight, large holding force and easy operation.





## 01 A 型

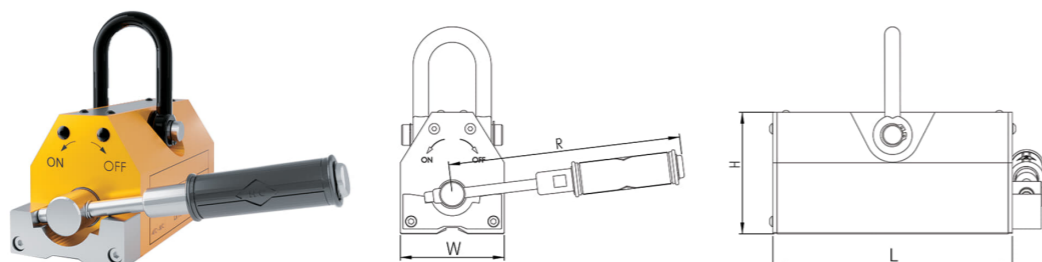
### A Series



型号 Item Code	额定起重力(kgf) Rated Lifting Strength	圆柱形起重力 Cylindrical Lifting Strength(kgf)	最大拉脱力 Max.Pull-off Strength(kgf)	W (mm)	L (mm)	H (mm)	R (mm)	使用温度 Operation Temperature	自重 Dead Weight
HCYQ100A	100	50	350	64	92	67	148	<80°C	3KG
HCYQ300A	300	150	1050	80.6	162	90	226	<80°C	7.5KG
HCYQ500A	500	250	1750	101	199.5	118	220	<80°C	20KG
HCYQ600A	600	300	2100	101	232.5	118	224	<80°C	23KG
HCYQ1000A	1000	500	3500	151	270	164	321	<80°C	55.5KG
HCYQ2000A	2000	1000	7000	190	380	212	445	<80°C	125KG
HCYQ3000A	3000	1500	10500	230.5	497	244	505	<80°C	220KG
HCYQ5000A	5000	2500	17500	430	541	206	816	<80°C	395KG
HCYQ6000A	6000	3000	21000	430	621	206	816	<80°C	440KG

## 02 C 型

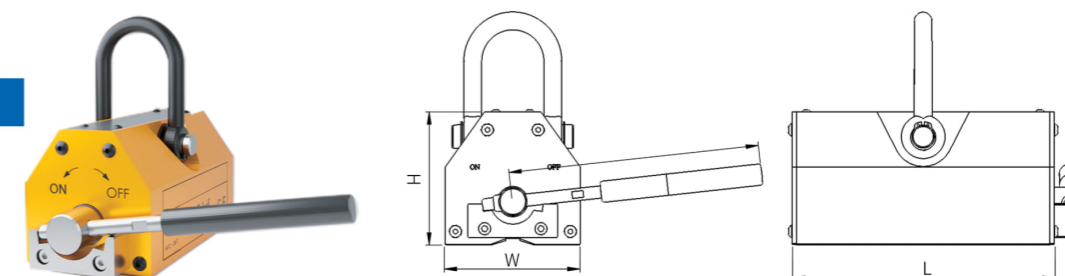
### C Series



型号 Item Code	额定起重力(kgf) Rated Lifting Strength	圆柱形起重力 Cylindrical Lifting Strength(kgf)	最大拉脱力 Max.Pull-off Strength(kgf)	W (mm)	L (mm)	H (mm)	R (mm)	使用温度 Operation Temperature	自重 Dead Weight
HCYQ100C	100	50	350	64	92	67	121	<80°C	3KG
HCYQ150C	150	75	525	64	125	67	110	<80°C	4.5KG
HCYQ200C	200	100	700	80.6	140	90	205	<80°C	6KG
HCYQ300C	300	150	1050	80.6	162	90	205	<80°C	7.5KG
HCYQ500C	500	250	1750	101	199.5	118	226	<80°C	20KG
HCYQ600C	600	300	2100	101	232.5	118	226	<80°C	23KG
HCYQ1000C	1000	500	3500	151	270	164	264	<80°C	55.5KG
HCYQ2000C	2000	1000	7000	190	380	212	370	<80°C	125KG
HCYQ3000C	3000	1500	10500	230.5	497	244	500	<80°C	220KG

## 03 D 型

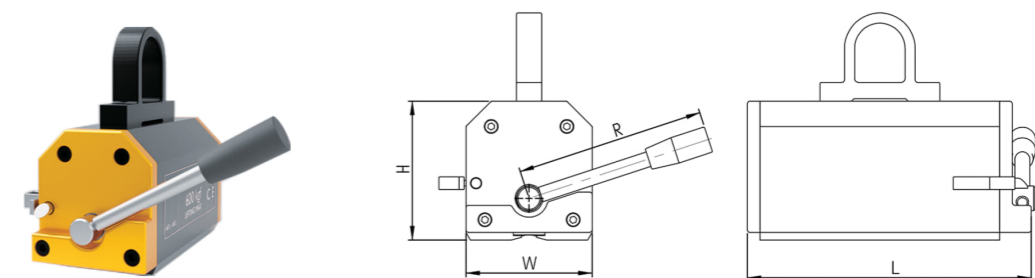
### D Series



型号 Item Code	额定起重力(kgf) Rated Lifting Strength	圆柱形起重力 Cylindrical Lifting Strength(kgf)	最大拉脱力 Max.Pull-off Strength(kgf)	W (mm)	L (mm)	H (mm)	R (mm)	使用温度 Operation Temperature	自重 Dead Weight
HCYQ100D	100	50	350	64	92	67	136	<80°C	3KG
HCYQ200D	200	100	700	80.6	140	90	171	<80°C	7.5KG
HCYQ300D	300	150	1050	80.6	162	90	171	<80°C	7.5KG
HCYQ500D	500	250	1750	101	199.5	118	226	<80°C	23KG
HCYQ600D	600	300	2100	101	232.5	118	226	<80°C	23KG
HCYQ1000D	1000	500	3500	151	270	164	264	<80°C	65KG
HCYQ2000D	2000	1000	7000	190	380	212	370	<80°C	145KG
HCYQ3000D	3000	1500	10500	230.5	497	244	500	<80°C	255KG

## 04 E 型

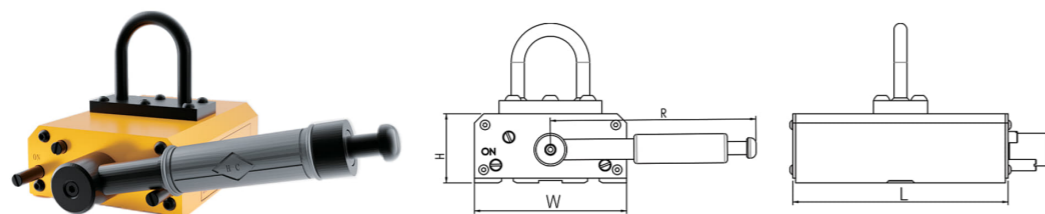
### E Series



型号 Item Code	额定起重力(kgf) Rated Lifting Strength	圆柱形起重力 Cylindrical Lifting Strength(kgf)	最大拉脱力 Max.Pull-off Strength(kgf)	W (mm)	L (mm)	H (mm)	R (mm)	使用温度 Operation Temperature	自重 Dead Weight
HCYQ100E	100	50	350	60	114	74	136	<80°C	3.5KG
HCYQ125E	125	50	438	60	114	74	136	<80°C	3.5KG
HCYQ150E	150	75	525	60	147	70	136	<80°C	5KG
HCYQ200E	200	100	700	80	146	85	136	<80°C	7.5KG
HCYQ300E	300	150	1050	80	186	91	136	<80°C	10KG
HCYQ500E	500	250	1750	100	230	110	150	<80°C	16KG
HCYQ1000E	1000	500	3500	170	305	165	285	<80°C	58KG
HCYQ2000E	2000	1000	7000	200	400	210	335	<80°C	116.5KG
HCYQ3000E	3000	1500	10500	230	525	246	580	<80°C	220KG

# 05 H 型

## H Series



型号 Item Code	额定起重力(kgf) Rated Lifting Strength	圆柱形起重力 Cylindrical Lifting Strength(kgf)	最大拉脱力 Max.Pull-off Strength(kgf)	W (mm)	L (mm)	H (mm)	R (mm)	使用温度 Operation Temperature	自重 Dead Weight
HCYQ100H	100	50	350	75	90	50	148	<-80°C	4KG
HCYQ200H	200	100	700	110	125	55	148	<-80°C	6.5KG
HCYQ300H	300	150	1050	132	162	60	180	<-80°C	9.5KG
HCYQ600H	600	300	2100	163	233	74	185	<-80°C	23KG
HCYQ1000H	1000	500	3500	190	300	85	210	<-80°C	58KG

# 工业用磁及其他

## MACHINERY ASSEMBLIES AND OTHERS

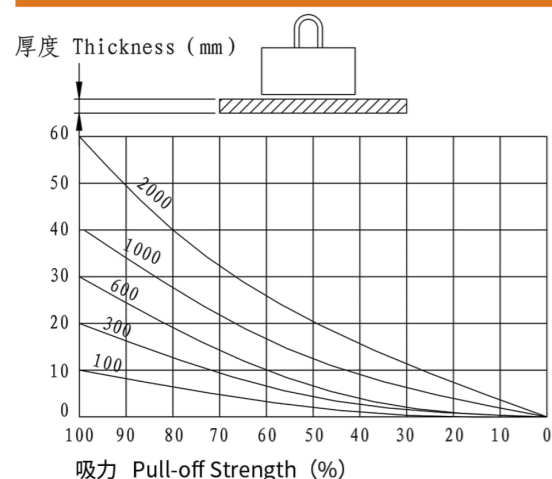
### 磁性转子

#### Magnetic Rotor

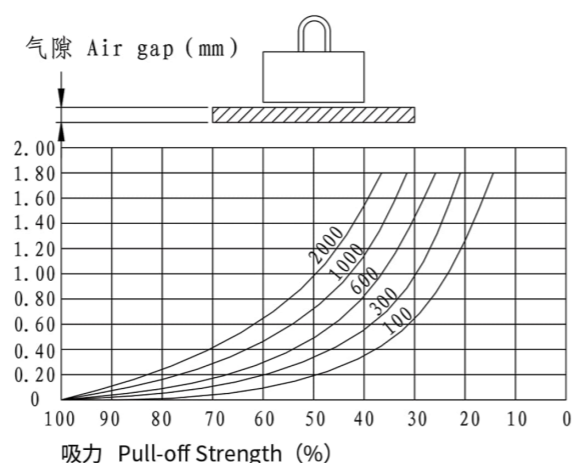
磁性转子一般由铁套和多片磁瓦组成，组装在一起作为电机的一个重要的组成部件——转子。广泛应用于步进电机、无刷直流电机、永磁电机等其他电机。

Magnetic rotor is generally composed of iron sleeve and several arc magnets. As a key part of motor, it has been used in motors, such as stepping motor, brushless DC motor and permanent magnetic motor.

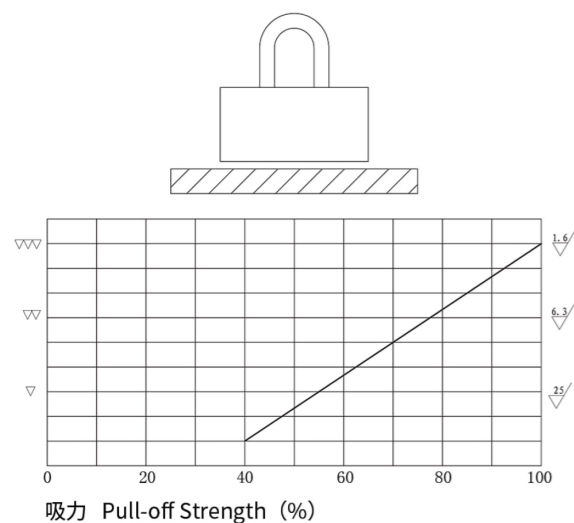
#### Thickness of Load and Pull-off Strength 载荷厚度和吸力



#### Air Gap and Pull-off Strength 气隙和吸力



#### Surface Finish and Pull-off Strength 载荷表面和吸力



- 将起重器放在负载物上  
Place the magnetic lifter on the load.
- 旋转手柄至磁路闭合位置  
Rotate the handle to the "ON" position.
- 手柄自动落锁，起重器进入工作状态  
The handle will be locked automatically, the magnetic lifter is in operation.



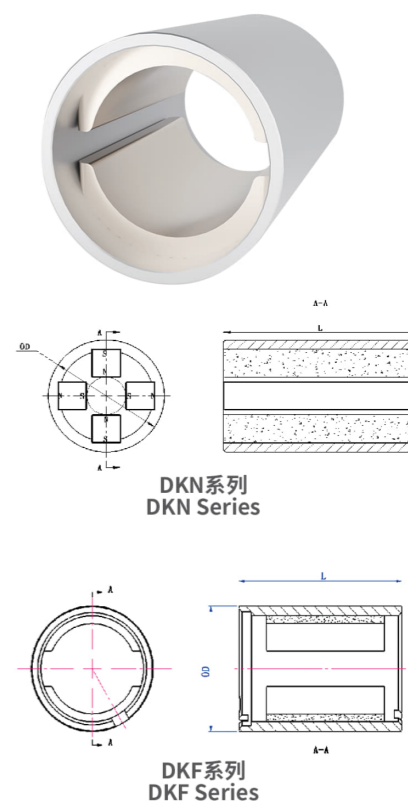
# 01 DK系列外转子

## DK Series Outer Rotor

在DK系列中，磁钢粘接在铁套的内壁，转子环绕在定子外围转动，同时扮演了绝缘体的角色。外转子结构最大的优势是能够非常明显地降低齿槽转矩。

For DK series, magnets stick to the inner wall of iron sleeve. Rotor, which rotates along the periphery of stator, is also an insulator. The most distinct advantage of outer rotor structure lies in its significant effect in reducing cogging torque.

型号 Item Code	Shell 外壳		Magnet 磁钢	
	OD (mm)	L (mm)	磁钢类型 Magnet Type	极数 Poles Number
DKN26-06	26	27.4	NdFeB	6
DKN28-02	28	41.6	NdFeB	2
DKN29.8-12	29.8	38	NdFeB	12
DKN29-02	29	48.5	NdFeB	2
DKN38-08	38	50	NdFeB	8
DKN40-14	40	13.8	NdFeB	14
DKN49-06	49	20	NdFeB	6
DKN49-06A	49	45	NdFeB	6
DKN50.75-04	50.75	85.1	NdFeB	4
DKN66-06	66	101.6	NdFeB	6
DKS26	26.1	45.2	SmCo	2
DKS30	30	30	SmCo	2
DKS32	32	42.8	SmCo	2
DKS32A	32	42.8	SmCo	2
DKF45-05	45	51	Ferrite	5
DKF45-05A	45	51	Ferrite	5
DKF82.5-02	82.5	95.25	Ferrite	2
DKF82.5-04	82.5	148.39	Ferrite	4
DKF90-02	90	161.47	Ferrite	2



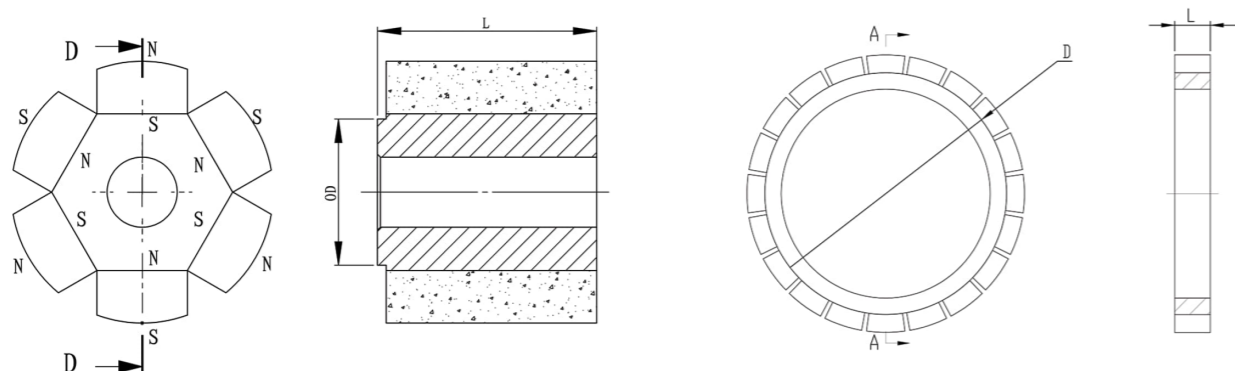
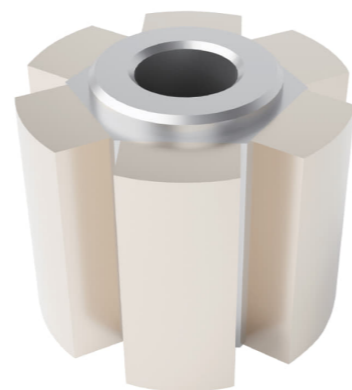


## 02 DK系列内转子

### DK Series Inner Rotor

磁性转子一般由铁套和多片磁瓦组成，组装在一起作为电机的一个重要的组成部件——转子。广泛应用于步进电机、无刷直流电机、永磁电机等其他电机。

For DZ series, magnets stick to outer wall of iron sleeve and is located at the center of stator and the whole motor. The most distinct advantage of inner rotor structure lies in its high heat dissipation efficiency.



型号 Item Code	Shell 外壳		Magnet 磁钢	
	OD (mm)	L (mm)	磁钢类型 Magnet Type	极数 Poles Number
DZN13.4-06	8	10	NdFeB	6
DZN18.7-10	15.2	5	NdFeB	10
DZN21.9-06A	14	46.5	NdFeB	6
DZN23-06	14.3	23.5	NdFeB	6
DZN24-14	14.88	13.5	NdFeB	14
DZN24-14A	14.88	21.5	NdFeB	14
DZN24-14B	14.88	26.3	NdFeB	14
DZN30-02	19	57	NdFeB	2
DZN45.9-06	26.8	37.5	NdFeB	6
DZN45.9-08	30.8	24.5	NdFeB	8
DZN45.9-20	40.5	6	NdFeB	20
DZN66.5-08	60	24.84	NdFeB	8
DZN90-06A	70	30	NdFeB	6
DZS24-06	15.9	13.59	SmCo	6
DZS24-14	17.09	13.59	SmCo	14
DZS24-14A	14.55	13.59	SmCo	14
DZS38-16	32	24.5	SmCo	16

## 磁性开关

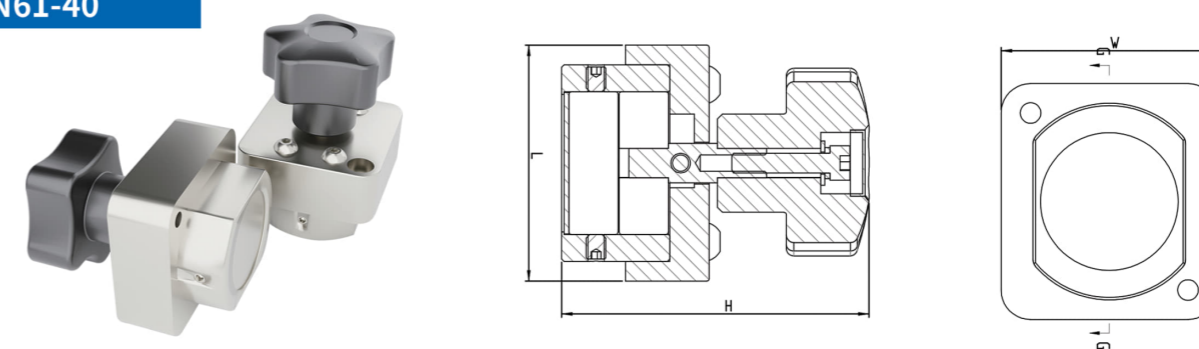
### Magnetic Switch

磁性开关由强力钕铁硼磁铁、旋转开关和金属部件等组成。它通过转动开关来改变磁铁的极性，从而产生强大的磁场。它们可以用作焊接工具或搬运升降机。它可以用磁力代替手握住钢板，焊接时非常安全。磁性开关重量轻，灵活，是焊接操作的好助手。

Magnetic switch is composed of strong NdFeB magnet, rotary switch and metal parts. It could change magnet polarity by rotating the switch in order to generate strong magnetic field. Therefore it can be used as a welding tool or handling lifter. It ensures welding safety, as the steel plate is held by magnetic force instead of hands. With a light weight and flexible operation, the switch could improve welding efficiency and safety.

## 01 HKN 61-40

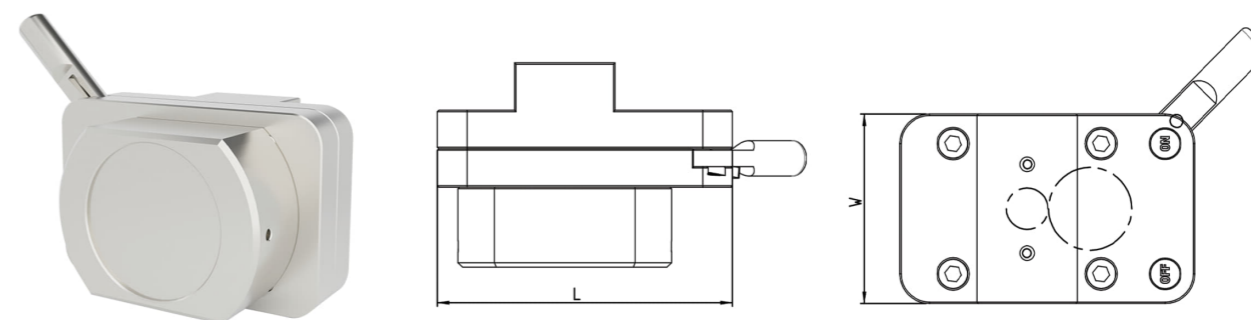
### HKN61-40



型号 Item Code	L (mm)	W (mm)	H (mm)	磁钢类型 Magnet Type	镀层 Coating	吸力 Pull Force
HKN61-40	48	44	62	NdFeB	Ni	60KG

## 02 HKN 61-72

### HKN61-72



型号 Item Code	L (mm)	W (mm)	H (mm)	磁钢类型 Magnet Type	镀层 Coating	吸力 Pull Force
HKN61-72	99.6	64	69	NdFeB	Ni	140KG



## 音响用磁

### Magnetic Speaker Driver

音响用磁又称扬声器磁驱动器或扬声器磁电机，是扬声器系统的必要部件。大多数磁性扬声器驱动器由磁铁、T铁（U碗）和垫片组成。磁铁可以是铁氧体磁铁，也可以是钕铁硼。

磁性扬声器驱动器是将电能转换为声波的单个换能器，通常用作扬声器、电视或其他电子设备的一部分。广泛应用于高端市场的高音喇叭或中档喇叭。

Also called loudspeaker driver or loudspeaker magnet motor, the magnetic speaker driver is a key part of loudspeaker system. A majority of magnet loudspeaker driver is composed of magnet, T iron (U-shaped iron) and steel washer. Magnet can either be ferrite magnet or NdFeB magnet.

Magnet loudspeaker driver, as part of loudspeaker, TV or other electronic devices, is a single energy converter that could transform electricity into sound wave. It has been widely used in high-tone loudspeaker or middle-grade loudspeaker in high end markets.



## 工厂展示

### FACTORY EMPHASIS

公司有大大小小300多台加工设备，其中包括5套焊接机器人，20多套自动数控加工设备和10套加工中心。

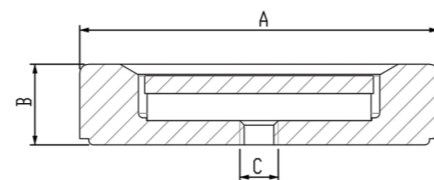
We have more than 300 sets of large and small equipment, including 5 welding robots and more than 30 high accuracy Computerized Numerical Control (CNC) machines.



## 01 HUN31 系列

### HUN31 Series

型号 Item Code	尺寸 Size	磁钢类型 Magnet Type	镀层 Coating
HUN01-19.6	D19.6×11	NdFeB	Zn
HUN01-40	D40×9-M4	NdFeB	Zn
HUN01-40A	D40×9-D8	NdFeB	Zn
HUN31-37	D37×10.5 (N45)	NdFeB	Zn
HUN31-37A	D37×10.5 (N38)	NdFeB	Zn
HUN31-37B	D37×10.5 (N38)	NdFeB	Zn
HUN31-37C	D37×10.5 (N45)	NdFeB	Zn
HUN31-57	D57×40-M5	NdFeB	/



## 02 UN32 系列

### HUN32 Series

型号 Item Code	尺寸 Size	磁钢类型 Magnet Type	镀层 Coating
HUN32-36	D36×18-M4	NdFeB	Zn
HUN32-40	D40×19.3-M4	NdFeB	Zn
HUN32-40A	D40×19.3-M4	NdFeB	Zn
HUN32-40B	D40×19.3-M4 (嵌铜套with copper sleeve)	NdFeB	Zn

